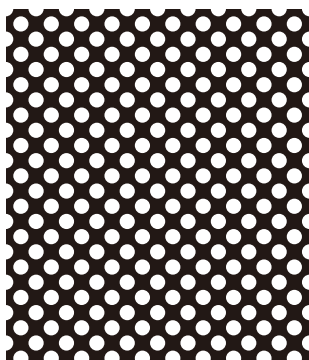


丸孔 45°

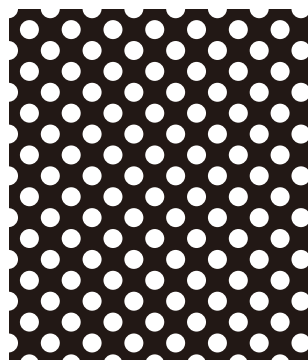
Round Perforations 45°



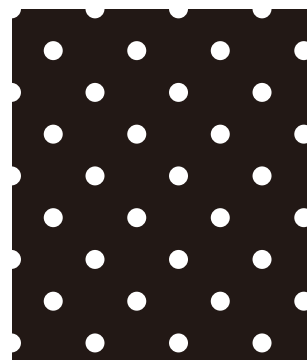
45 2.0φ × 4.0P
開孔率 39.3%



46 2.0φ × 6.0P
開孔率 17.4%



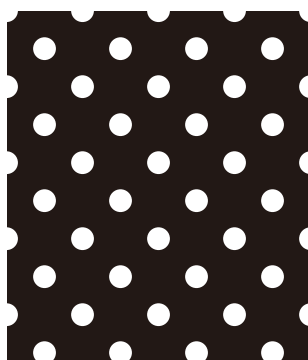
47 2.5φ × 5.5P
開孔率 32.4%



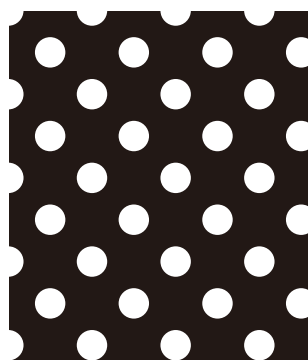
48 2.5φ × 11.0P
開孔率 8.1%



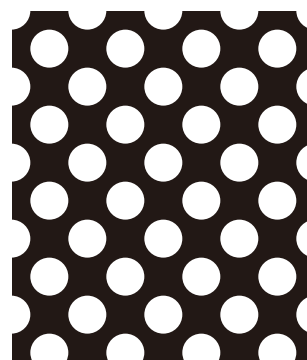
49 3.0φ × 7.0P
開孔率 28.8%



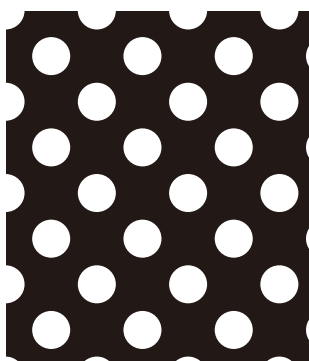
50 3.0φ × 10.0P
開孔率 14.0%



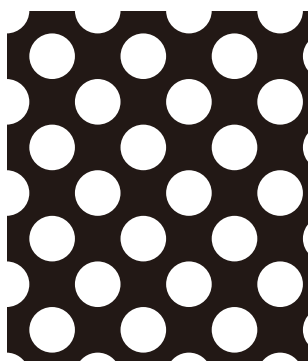
51 4.0φ × 11.0
開孔率 20.8%



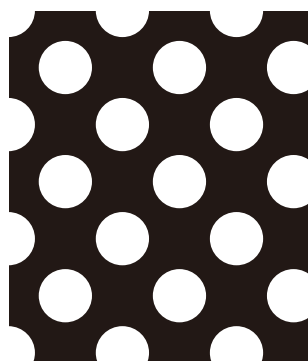
52 5.0φ × 10.0P
開孔率 39.3%



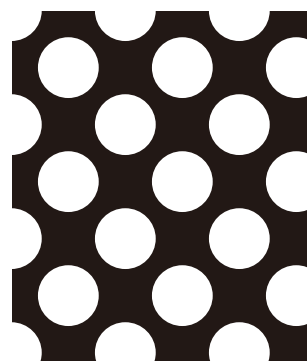
53 5.0φ × 12.0P
開孔率 27.3%



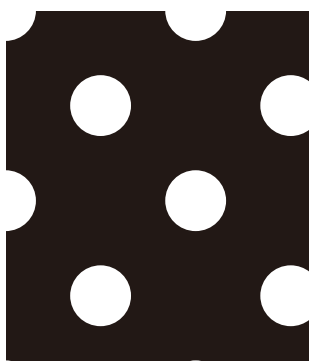
54 6.0φ × 12.0P
開孔率 39.3%



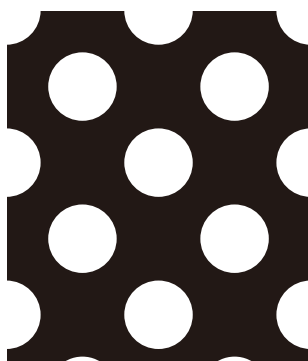
55 7.0φ × 15.0P
開孔率 34.2%



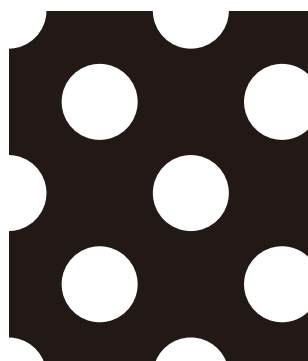
56 8.0φ × 15.0P
開孔率 44.7%



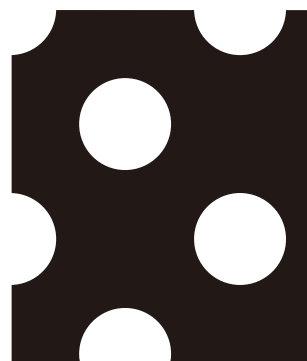
57 8.0φ × 25.0P
開孔率 16.1%



58 9.0φ × 20.0P
開孔率 31.8%



59 10.0φ × 24.0P
開孔率 27.3%



60 12.0φ × 30.0P
開孔率 25.1%